

baby

DOUBLE BUBBLE

BODY WASH, SHAMPOO & BUBBLE BATH

3-in-1 body wash, shampoo and bubble bath with calming Calendula and Chamomile

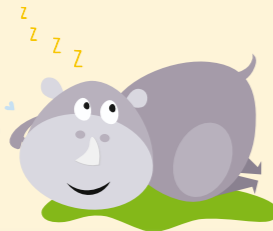
- ✓ No colourants
- ✓ Natural origin ingredients
- ✓ No parabens



CALICALM

CALMING CALENDULA AND LAVENDER BATH & MASSAGE OIL

- ✓ No colourants
- ✓ No preservatives
- ✓ No parabens
- ✓ Organic ingredients



SNAPPY NAPPY

SOOTHING CALENDULA & ALOE VERA BARRIER CREAM

Contains Zinc Oxide, Calendula & Aloe Vera to soothe sensitive bums and beeswax to form a protective barrier

- ✓ No colourants
- ✓ No fragrance
- ✓ No parabens



STRETCHMARK SERUM

Dermatologically approved and suitable for sensitive skin. It contains the unique Oleosoft-40*, scientifically proven to help reduce stretchmarks. Stretchmark Serum also offers quick absorption with excellent moisturising properties and improves skin elasticity, leaving skin feeling silky soft and smooth.

- ✓ Reduces the appearance of stretchmarks
- ✓ Improves elasticity & suppleness
- ✓ Intensely moisturises
- ✓ Is gentle on skin
- ✓ Is quick absorbing
- ✓ Has no oily residue



NIPELLA

LANOLIN-BASED NIPPLE OINTMENT FOR MOMMY

Helps soothe and protect sore and cracked nipples and skin

- ✓ GMO free
- ✓ 100% natural
- ✓ No fragrance
- ✓ No preservatives



When developing the personal care range, Natura strives to always source raw materials which are of Natural origin (Organic or Eco-cert approved) and from sustainable resources.

Arnica D6 Melts BV12549* Contains: Arnica montana D6.* **Caturo Melts** U1019* Contains: Aconitum napellus Spag D4, Eucalyptus globulus, Spag D3, Eupatorium perfoliatum Spag D3, Gelsemium sempervirens Spag D4, Hydrastis canadensis Spag D4, Kalium bichromicum D6, Pulsatilla vulgaris Spag D3, Sanguinarinum nitrica D6, Thuja occidentalis Spag D8.* **Danon Melts** U504* Contains: Aloe ferox 3CH, Arsenicum album 5CH, Cinchona succirubra 3CH, Citrullus colocynthis 3CH, Magnesium phosphoricum 5CH, Matricaria recutita 3CH, Mercurius corrosivus 3CH, Podophyllum peltatum 3CH, Veratrum album 3CH.* **Dental Melts** U505* Contains: Aconitum napellus 5CH, Bryonia cretica 5CH, Calcium carbonicum 5CH, Calcium fluorium 5CH, Calcium phosphoricum 5CH, Delphinium staphisagria 9CH, Ferrum phosphoricum 5CH, Matricaria recutita (Chamomilla) 5CH, Silicea 5CH, Strychnos ignatia 9CH.* **Ezin Cough Syrup** U507* Contains: Antimonium tartaricum 5CH, Bryonia cretica 5CH, Cephaelis acuminata (Ipecacuanha) 5CH, Coccus cacti 5CH, Corallium rubrum 5CH, Cuprum metallicum 7CH, Drosera rotundifolia 5CH, Ferrum phosphoricum 5CH, Rumex crispus 5CH, Sambucus nigra 5CH, Spongia tosta 5CH, Stictia pulmonaria 5CH. Preservatives/Preserveermiddelen: 28% Alcohol/Alkohol, 50% Glycerol/Gliserol, Sugar free. Suiker vry. **Karma Sleep Melts** U512* Contains: Avena sativa D3, Coffea cruda 30CH, Humulus lupulus D3, Matricaria recutita (Chamomilla) 3CH, Medicago sativa D3, Passiflora incarnata D3, Valeriana officinalis D3.* **Kolik Melts** U515* Contains: Antimonium crudum 5CH, Argentum nitricum 5CH, Carbo vegetabilis 5CH, Citrullus colocynthis 6CH, Lycopodium clavatum 5CH, Magnesium phosphoricum 5CH, Matricaria recutita (Chamomilla) 5CH, Mercurius solubilis 9CH, Natrium tetraboracicum 5CH, Strychnos nux-vomica 5CH.* **Kronolax Melts** U516* Contains: Alumina 5CH, Bryonia cretica 5CH, Chelidonium majus 5CH, Hydrastis canadensis 5CH, Lycopodium clavatum 5CH, Plumbum metallicum 5CH, Solidago virgaurea 5CH, Strychnos nux-vomica 5CH.* **Magen Melts** U1074* Contains: Anamirta cocculus Spag D8, Antimonium crudum D10, Arsenicum iodatum D6, Atropa belladonna Spag D8, Carbo vegetabilis D30, Cephaelis acuminata Spag D8, Cinchona succirubra Spag D3, Daphne mezereum Spag D8, Magnesium phosphoricum D10, Strychnos nux-vomica D4.* **Moton Melts** U520* Contains: Apomorphia hydrochloricum 6CH, Anamirta cocculus 3CH, Cephaelis acuminata 3CH, Cuprum metallicum 6CH, Ferrum phosphoricum 5CH, Iris versicolor 3CH, Petroleum 3CH, Strychnos nux-vomica 5CH, Tabacum 3CH Veratrum album 6CH.* **Proлак Melts** U525* Contains: Calcium carbonicum 5CH, Calcium fluorium 5CH, Calcium phosphoricum 6CH, Chamamelinum luteum 5CH, Ferrum phosphoricum 5CH, Graphites 5CH, Pulsatilla pratensis 3CH, Ricinus communis 5CH, Silicea 5CH, Urtica urens 5CH, Vitex agnus-castus 5CH.* **Rescue Melts** Registry No 154388 Contains: Ambra grisea D6, Banisteropsis caapi Spag D60, Melissa officinalis Spag D3, Clematis vitalba (Clematis) aqua inf. 0.4 mcg, Helianthemum nummularium (Rock Rose) aqua inf. 0.4 mcg, Impatiens glandulifera (Impatiens) aqua inf. 0.4 mcg, Ornithogalum umbellatum (Star of Bethlehem) aqua inf. 0.4 mcg, Prunus cerasifera (Cherry Plum) aqua inf. 0.4 mcg.* **Starlite Melts** U534* Contains: Aconitum napellus 5CH, Allium cepa 5CH, Arnica montana 5CH, Arum triphyllum 5CH, Eupatorium perfoliatum 5CH, Ferrum phosphoricum 5CH, Gelsemium sempervirens 5CH, Histaminum 9CH, Rhus toxicodendron 5CH, Sambucus nigra 5CH.*

* (Act 101/1965)

*Contains sugar (Lactose 47 mg)/Bevat suiker (Laktose 47 mg)

CoMED Health (Pty) Ltd, 313 Kuit Street, Pretoria, 0184.
Tel: 012 813 9400. www.natura.co.za

MBBFL/1961

NATURA

MOM & BABY
Homoeopathic Remedies



NATURA
MOM & BABY
 Homoeopathic Remedies

Introducing the Natura mom & baby range of homoeopathic remedies. Natura's remedy range offers gentle solutions for many of the common niggles and complaints for mom and baby. From morning sickness and breastfeeding, to colic & teething. All the remedies are prepared as quick dissolving tablets making it easy to administer to baby.



For Mom



For Mom & Baby



For Baby



Personal Care Range



Lactation

- Supports milk production
- Eases pain associated with breastfeeding

Nappi: 879533005

USE WITH NIPELLA NIPPLE OINTMENT TO HELP SOOTHE CRACKED SORE NIPPLES



Bumps & Bruises

- Bruises
- Muscle soreness

Nappi: 847631002



Sleeplessness

- Difficulty falling or staying asleep
- Restless sleep
- Changes in sleeping pattern

Nappi: 851973019

USE CALICAM MASSAGE AND BATH OIL TO HELP RELAX YOUR BABY



Distress

- Tearfulness
- Emotional shock
- Anxiety or fear
- Restlessness

Nappi: 813508003



Snuffles

- Runny nose
- Post nasal drip
- Nasal congestion
- Thick sticky tears

Nappi: 3000750001



SNAPPY NAPPY IS THE IDEAL BARRIER CREAM FOR NAPPY RASH DUE TO TEETHING

Teething

- Painful gums
- Difficult or delayed teething
- Runny tummy with teething
- Emotional and crying due to teething

Nappi: 879355018



Coughs

- Mild Coughs
- Wet & dry coughs

Nappi: 872261019



Colds & Flu

- Sore throat
- Coughs
- Mild Fever
- Stuffy or runny nose

Nappi: 879959002



DID YOU KNOW?

Our melts tablets are easy to dissolve in a baby's mouth



Indigestion

- Indigestion
- Bloating
- Nausea after eating
- Motion sickness
- Heartburn

Nappi: 3000751001



Colic

- Persistent crying
- Crying after feeding
- Flushed face when crying

Nappi: 879479019

Constipation

- Constipation
- Difficulty passing stool
- Abdominal discomfort

Nappi: 879436018



NOW WOULD BE THE IDEAL TIME TO START USING O4 SERUM STRETCHMARK GEL



Runny Tummy

- Diarrhoea
- Loose & watery stool
- Involuntary stool

Nappi: 879347007



Morning Sickness

- Nausea & vomiting in the morning
- Dreadful persistent nausea
- Severe water brash

Nappi: 879509007